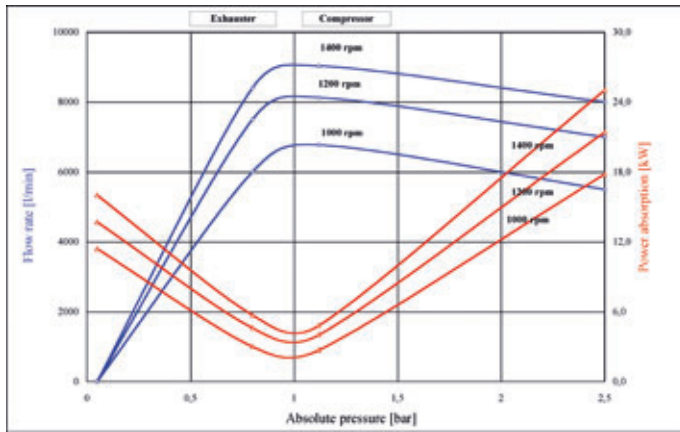
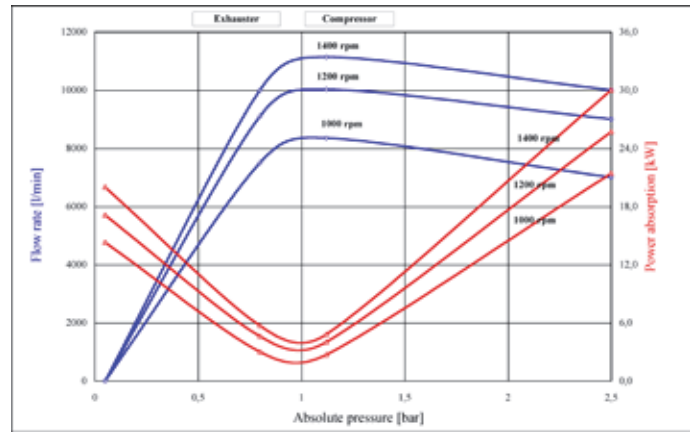


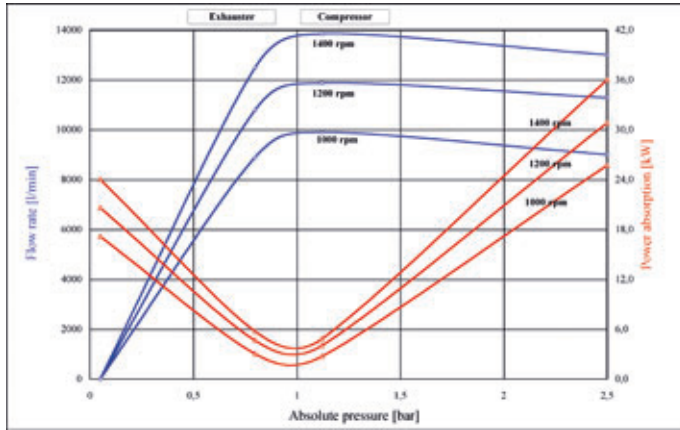
MEC 9000 H



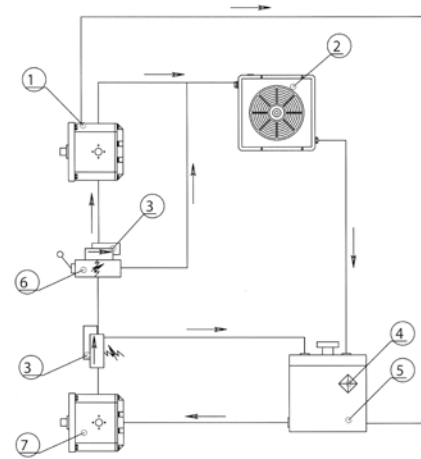
MEC 11000 H



MEC 13500 H



HYDRAULIC SYSTEM



- ① Motore Idraulico
Hydraulic motor
Moteur hydraulique
Hydraulic Motor
Motor hidráulico
Motor hidráulico
- ② Radiatore
Radiator
Radiateur
Radiador
Radiador
- ③ Valvola di sovrappressione
Overpressure valve
Soupape de surpression
Überdruckventil
Válvula de sobrepresión
Válvula de sobrepresión
- ④ Filtro olio
Oil filter
Filtre de l'huile
Ölfilter
Filtro aceite
Filtro óleo
- ⑤ Serbatoio
Tank
Reservoir
Behälter
Depósito
Reservatório
- ⑥ Distributore
Distributor
Distributeur
Steuerventil
Distribuidor
Distribuidor
- ⑦ Pompa idraulica
Hydraulic pump
Pompe hydraulique
Hydraulische Pumpe
Bomba hidráulica
Bomba hidráulica

Code	Hydraulic Engine Motore Idraulico	Rotary vanes pump	Max Working Pressure Pressione Max Di Esercizio	Capacity Portata l/min	R.P.M. Giri/min	Pressure Pressione	Hydraulic System Max Pressure Pressione Max Impianto Idraulico	Output Potenza Trasmessa	Torque Coppia (Nm)	Article
608020057	KM 30.51-SO	MEC 9000/H	1 bar	74.8	1400	155 bar	230 bar	16 kW	112	609/F
608020057	KM 30.51-SO	MEC 11000/H	1 bar	74.8	1400	223 bar	230 bar	23 kW	162	609/F
608020061	KM 40.87-SO	MEC 9000/H	1.5 bar	125	1400	145 bar	280 bar	25 kW	176	608/F
608020061	KM 40.87-SO	MEC 11000/H	1.5 bar	125	1400	174 bar	280 bar	30 kW	211	608/F
608020061	KM 40.87-SO	MEC 13500/H	1.5 bar	125	1400	209 bar	280 bar	36 kW	253	608/F

DATI TECNICI (technical data / données techniques / technische Daten / Datos tecnicos)	MEC 9000	MEC 11000	MEC 13500	
Portata geometrica (Geometrical capacity / Débit géométrique / Geometrisch leistung / Caudal geométrico / Capacidade geométrico)	[l / min]	9.030	11.137	13.845
Regime di lavoro max / H (max rpm / tours maximum / max drehzahl / rpm max)	[rpm]	1400	1400	1400
Pressione max Assoluta (Relativa) Max absolute(relative) pressure / pression max absolue (relative) / max absolut (relativ) druck / presión max absoluta (relativa)	[bar]	2.5 (1.5)	2.5 (1.5)	2.5 (1.5)
Depressione senza valvola regolazione vuoto installata (Vacuum without depression valve fitted / vide sans soupape de depression montee / vakuum ohne eingebaute unterdruckventil / depresión sin válvula de vacío incorporada)	[bar]	-0.95	-0.95	-0.95
Depressione con valvola regolazione vuoto installata (Vacuum with depression valve fitted / vide avec soupape de depression montee / vakuum mit eingebaute unterdruckventil / depresión con válvula de vacío incorporada)	[bar]	-0.80	-0.80	-0.80
Ass. potenza a vuoto max, (power absorption per max vacuum / absorption puissance pour vide maximum / leistungsbedarf bei max vakuum / potencia absorbida max vacío)	[kW]	16	20	24
Ass. potenza a 2.5 bar assoluti, 1400 r.p.m. (power absorption at 2.5 bar absolute, 1400 rpm / absorption puissance a 2.5 bar absolute, 1400 rpm / leistungsbedarf zu 2.5 absolute 1400 rpm / potencia absorbida a 2.5 bar absoluta, 1400 rpm)	[kW]	25	30	36
Peso netto (net weight / poids net / netto-gewicht / peso neto)	[Kg]	140	155	173