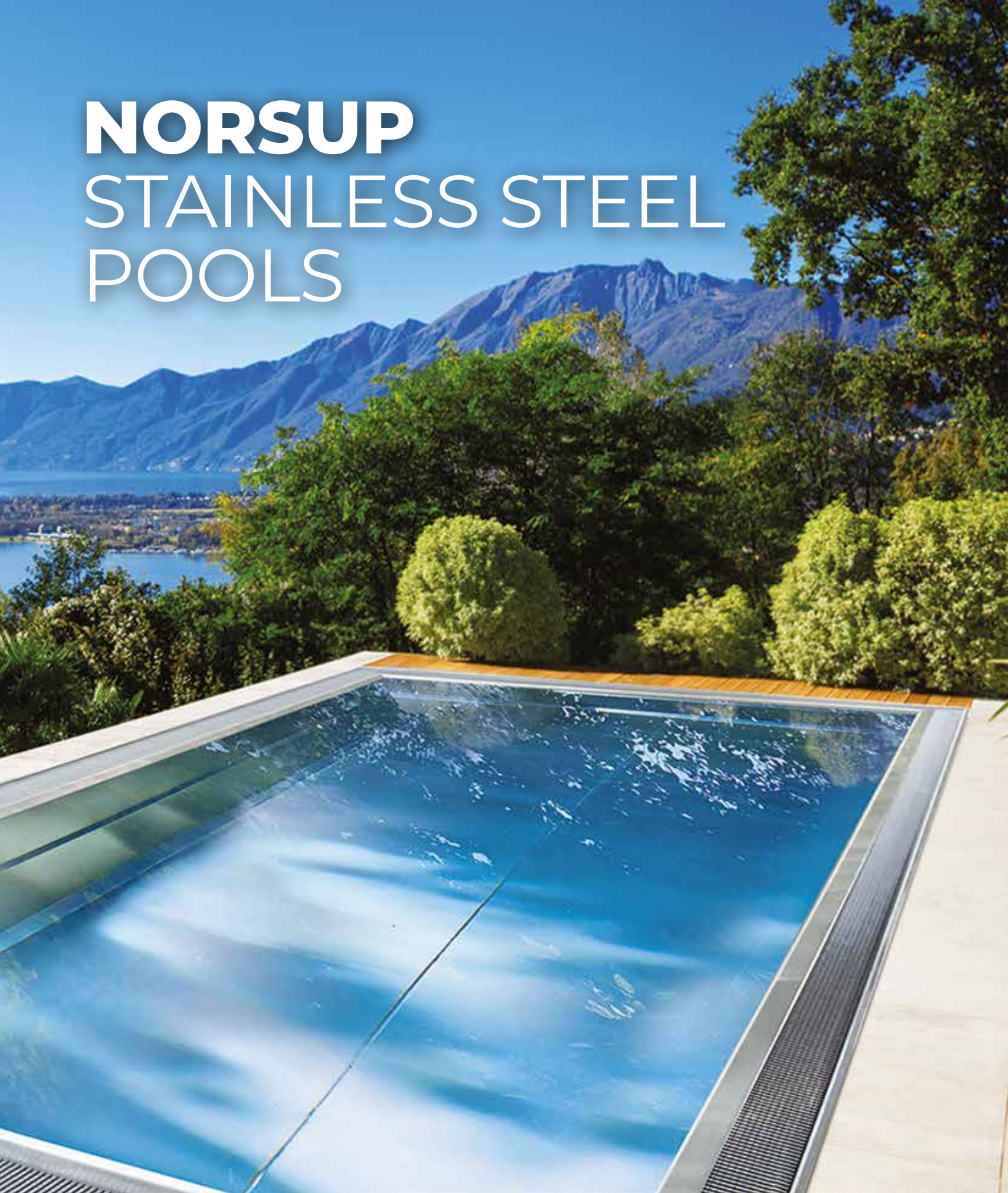



NORSUP STAINLESS STEEL POOLS




NORSUP



EUROPE'S LEADING **MANUFACTURER**

The manufacturer of Norsup pools have completed more than 20,000 projects making it one of the leading pool manufacturers in Europe.

They focus on high quality pool production, never resorting to the mass production of inferior quality products. The manufacturer has invested significant resource into the development and innovation of its products and can fulfil the most discerning client requests.

FOR YOUR **STYLISH HOME**



High-quality, stainless steel pools are becoming more and more popular. This is not only due to the modern, timeless appearance of the material and its simple elegance, but also thanks to the unique properties of stainless steel, such as resistance to frost, heat and UV radiation. The smooth stainless steel surface also provides perfect conditions for optimal hygiene while minimising maintenance. Its greatest advantage, however, is its lifespan.



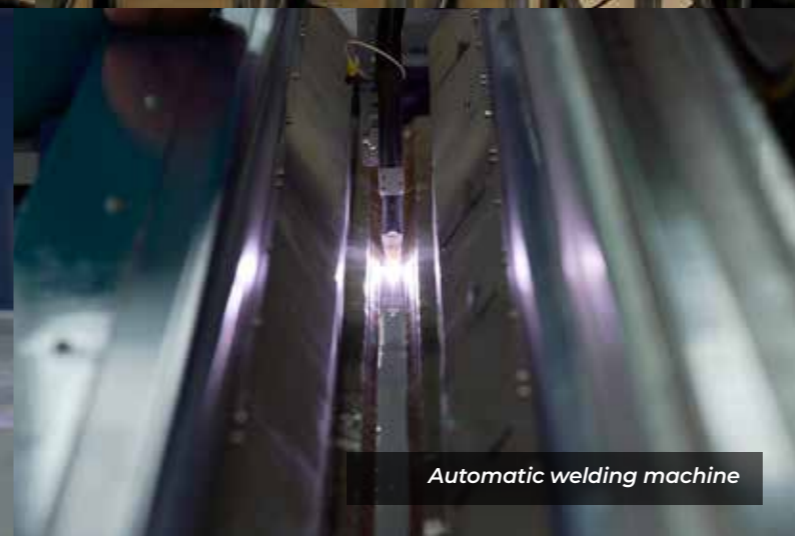
STAINLESS STEEL **POOLS**



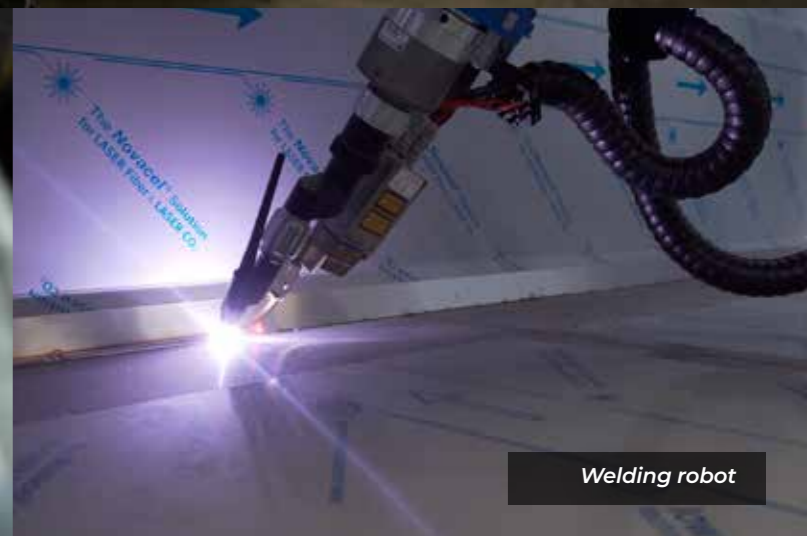
CNC laser



Skilled & experienced assembly staff



Automatic welding machine



Welding robot

A STATE-OF-THE-ART POOL PRODUCTION PROCESS

- All design documents available
- All steel cutting performed by CNC laser
- Walls & bottom sheets are folded by CNC press brake
- Tread patterns on the floor and steps made using CNC punching press
- Longitudinal & vertical welds are completed using a state-of-the-art welding robot
- Pool reinforcements & attachments are manufactured and assembled in-house
- All steps, benches and components are welded to the pool walls
- All welds are chemically cleaned and the entire pool is passivated
- Comprehensive bracing and packaging is applied ready for transport



ONE OF A KIND INDIVIDUALITY OF NORSUP STAINLESS STEEL POOLS

ENTIRELY WELD FREE WALLS



Our stainless steel pools offer walls that are entirely weld free up to a length of 10 metres. This unbeatable characteristic ensures perfectly straight walls and eliminates the risk of corrosion.

The appearance of the pool is unblemished, without unsightly welds along its entire length.

USE OF HIGHLY ADVANCED TECHNOLOGIES



Only Norsup stainless steel pools are welded using a state of the art robotic line, which guarantees 100% quality and precise aesthetic welding.

Norsup pools are the only pools on the European market using this revolutionary technology. Thanks to the precise automated welding processes we have eliminated any chance of human error and therefore we reach the highest standards possible. For those welds which require bespoke finishing, our experienced team of highly trained welders will complete the finishing touches and carry out our rigorous quality controls.

'AL-FA' ALL IN FACTORY SYSTEM



We deliver the pool fully finished and in one compact piece, directly to the site. This means we can shorten installation time and reduce associated costs. Stainless steel pools pre-fabricated on the factory floor lead to less debris, noise and foot traffic at the installation site. Projects can be installed in less time and can be ready for filling with water within a few hours of installation. Leak-proofing, passivation and insulation are carried out at the factory.



BENEFITS YOU WILL APPRECIATE



REINFORCED WALLS

The walls of the pool are reinforced with two horizontal folds to ensure the highest possible stability and strength of the entire structure.



INTEGRATED INSULATION

The walls and floor of the pool are delivered to the installation site including insulation and reinforcement. The insulation on the pool wall is from 2 to 5 cm thick, and on the floor it is 10 cm thick.



RAISED ANTI-SLIP SURFACE

The stairs and floor (on request) have an aesthetic raised-square or raised-circle pattern, which ensures safe use without the risk of slippage.



STAINLESS STEEL COMPONENTS

Stainless steel pools are equipped with all stainless steel components from quality manufacturers. The components are welded directly to the pool-body plates, without the use of screws or seals. The great advantage of this approach is to minimise the risk of any future leakage.



MAIN DRAIN CHANEL

This specific system ensures uniform, optimal, water circulation and highly efficient water cleaning. The channel, with its anti-slip surface, runs the full length of the pool and is equipped with multiple inlet holes. No nozzles are needed on the walls and so no pipework is required around them. The bottom suction is integrated into the drain channel.



SHAFT FOR SLATTED POOL COVER

The shaft allows the underwater-level pool cover to be installed in a panel across the width of the pool. The cover itself, therefore, does not interfere with swimming and is completely covered with a removable panel to ensure maximum safety.



THE FUTURE BUILT ON **STAINLESS STEEL**

The high-quality AISI 316L stainless steel used for Norsup stainless steel swimming pools offers a range of excellent production options and guarantees long lifespan, maximum stability and durability. The steel known as "Austenitic stainless steel" is an alloy of several metals, such as chromium, nickel, carbon and molybdenum. It is a multifunctional material that gives the pool a fresh, luxurious and modern look and is an ideal choice for outdoor use.



Modern, exclusive and clean design



Long service life without loss of quality



Hygienic, smooth and non-porous surface with antibacterial properties



Colour fastness and high mechanical and thermal resistance



Easy maintenance and low-cost operation



100% recyclable



OVERFLOW POOL

Overflow pools are popular for their filtration efficiency and exclusive design. The water level reaches the top edge of the pool and corresponds to the actual pool depth. Any floating material is immediately drained into the overflow channel around the entire perimeter of the pool and efficient recirculation of the water guarantees its cleanliness.

MAXIMUM INTERNAL DIMENSIONS

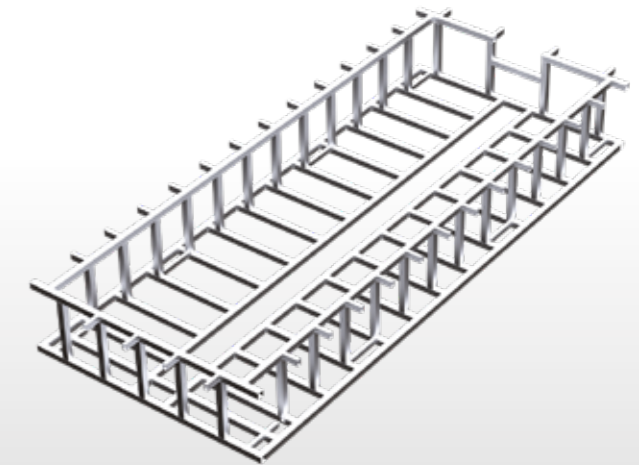
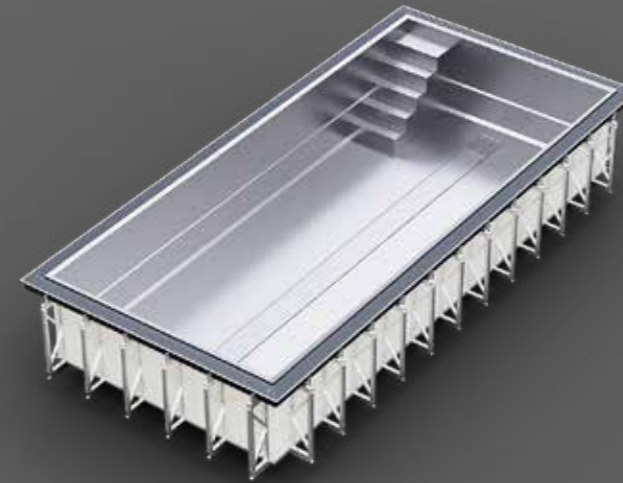
Distance between pool walls below the top:

Length: 1000 cm

Width: 330 cm

Depth: 134-150 cm

INSTALLATION VARIANTS



STANDARD WITH REINFORCEMENTS

In-ground pool for concreting or backfill version for poured concrete or gravel backfill. Installed and anchored to a concrete foundation base with side supports. After anchoring, the pool is filled with water and backfilled with poured concrete or gravel.

FREE-STANDING

Above-ground pool, free-standing construction - self-supporting model with a solid frame, when an in-ground pool option is not required. The pool is anchored to a concrete foundation base for correct levelling.

Ensures ease of integration into any setting, so the product will surpass any project requirements. Recommended for terraces, roofs or for sloping terrain. This feature also allows for a potential change of location in the future.



EASY CLEAN OVERFLOW CHANNEL

The overflow channel with its easy clean system does not contain any internal reinforcements, as its strength is provided by the external structure. This gives the advantage of simple, fast, obstruction-free, mechanical cleaning.



V-FLOW SILENT SUCTION

Specially designed drains from overflow channels optimise the flow of water and thus ensure its fast outflow. Furthermore, they reduce noise by up to 50%, compared to standard overflow channels.



SPECIAL DESIGN OVERFLOW GRATING

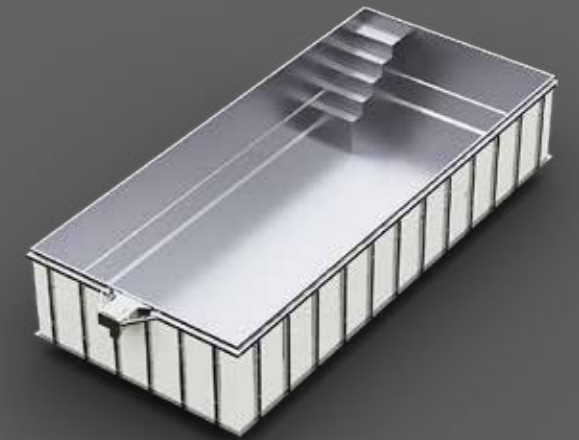
Our newly developed and highly functional stainless-steel-like grating is made of high quality, durable polypropylene. This ensures rapid, effective drainage. The choice of material completely eliminates the possibility of corrosion in this otherwise very exposed area.



INSTALLATION VARIANTS

STANDARD

In-ground pool for concreting. Variant for poured concrete: the pool is placed on a concrete base and filled with water, while the side walls are backfilled with a dry or semi-dry concrete mix for reinforcement.



SKIMMER POOL

The skimmer pool is the most widely used type, especially for private projects. It is a simple, efficient system with trouble-free operation. Water from the pool is drawn into a collector - the skimmer - from where it is pumped to the filtration system. This is a popular solution for those who require the luxury of a stainless steel garden pool with a minimum of operational intervention.

MAXIMUM INTERNAL DIMENSIONS

Distance between pool walls below the top:
 Length: 1000 cm
 Width: 350 cm
 Depth: 140-150 cm

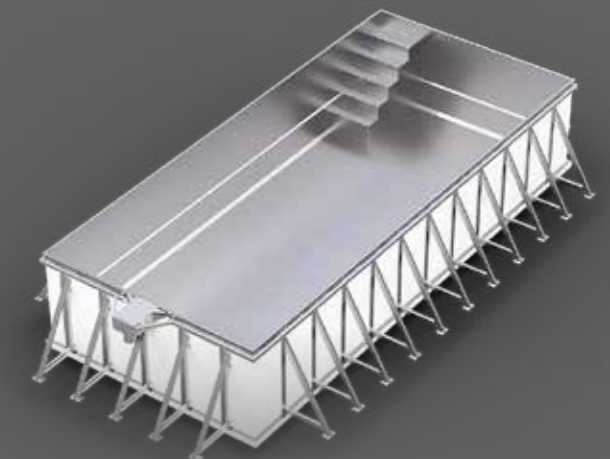
FREE-STANDING

Above-ground pool, free-standing construction - self-supporting model with a solid frame, when in-ground installation is not necessary. Ensures ease of integration into any setting and so the product will surpass any project requirements. Recommended for terraces, roofs or for sloping terrain. This feature also allows for a potential change of location in the future.



WITH REINFORCEMENTS

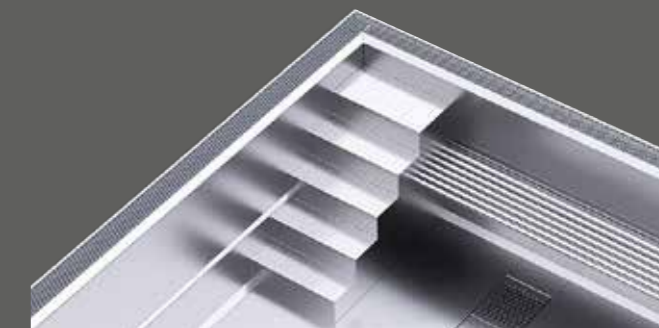
In-ground pool for backfill. Variant for gravel backfill: the pool is placed on a concrete base and filled with water, while the side walls are backfilled with gravel. The heavy-duty reinforcement is installed on site.





REST BENCHES

A comfortable rest bench will not only provide you with a relaxation zone, but can also be used to store a slatted pool cover.



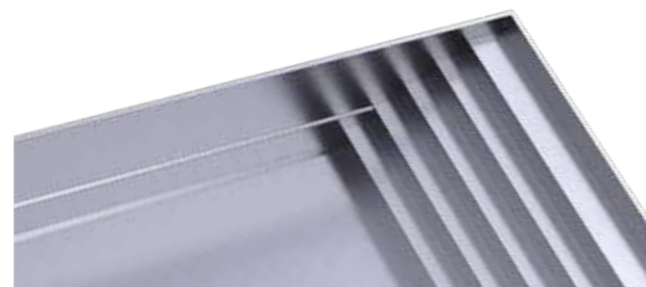
Tubular bench



Bench for slatted pool cover

VARIANTS OF ENTRANCES TO SWIMMING POOLS AND REST BENCHES

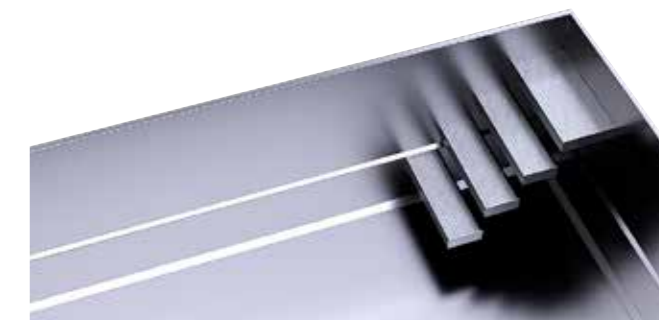
Choose the entrance staircase to your pool according to your wishes. The stair treads have an aesthetic pattern of raised squares or circles, which ensures safe use without the risk of slipping.



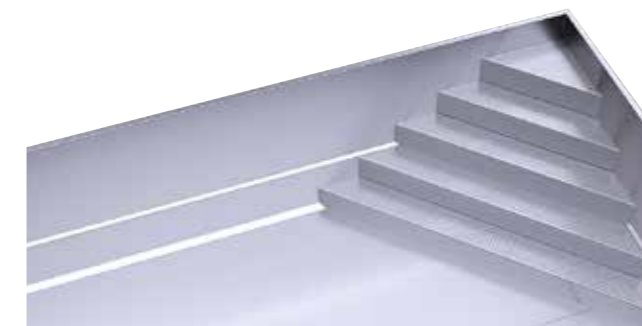
Stairs along the entire pool ISTF



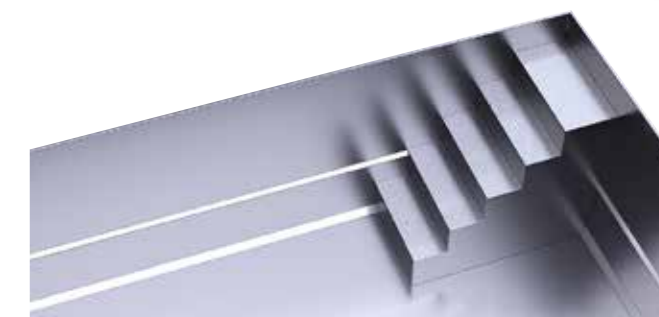
Square corner stairs ISTB



Cantilevered stairs ISTX



Square diagonal stairs ISTJ



Square stairs ISTC

HIGH QUALITY ACCESSORIES

Norsup pools are equipped with only the highest quality, branded components from our long-term partners. All components are rigorously tested and their high-quality stainless steel processing is a guarantee of long life and minimal maintenance requirements.



Counter current systems



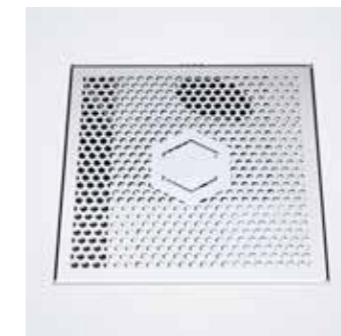
Skimmers



Handrails



Nozzles



Bottom suction inlet



Lights



Norsup stainless steel pools 2023 UK

Powered by
bosta bevo
bringing water to life


NORSUP
BRINGING WATER TO THE NEXT LEVEL