

Installation Instructions – KB/KBA 2”

1. Before starting the installation procedure, flushing of the pipe lines should be implemented, to ensure that there are no stones and other foreign matter present.
2. The KB/KBA 2” should be installed in “open” condition (the pointer in the control system does not point at “zero”).
3. When installation is completed, the irrigation system should be flushed again. Then the KB/KBA 2” should be closed and the connections checked for leakages.
4. It is recommended to install a strainer on the supply line before the KB/KBA 2” in order to prevent damage to the impeller by stones or other foreign matter.

KB/KBA 2” – Instructions of Parts Replacement

Please ensure that before starting the replacement Dose-O-Mat is un-pressured and empty of water

1. Main disassembly

1.1 Disassembly Valve B (22)

- Open screw B (No. 23)

1.2 Disassembly of belt ring (no. 4)

- Open screw no. 18
- Keep nut No. 3 and washer (No. 19)

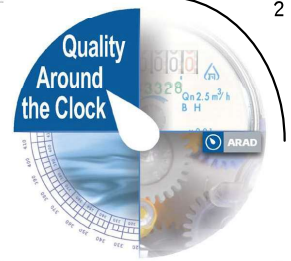
Please notice that the stage should be under the housing valve in the control cover, No. 1.

1.3 Disassembly of the control cover (No. 1)

- Release the transmission register KB/KBA 2” (No. 10) while picking up the control cover (No. 1).
- When reassembling, ensure that the nuts (no. 3) are in place.

1.4 Disassembly of the control mechanism KB/KBA 2” (No. 2)

- Pick up the control mechanism, be sure that the gear 50 (No. 9) is in place.
- When reassembling, ensure that the control mechanism slip is inside the control cover and the gear 50 (No. 9) is combined with (gear 100) the control mechanism.



1.5 Disassembly of dialog cover (No. 6)

- Open the dialog cover with a special tool (see scheme A).
- Take off cover ring No. 7 and O-Ring No. 8.
Please check if it is in good condition.

1.6 Disassembly of transmission register KB/KBA 2" (No. 10)

- Release the register (No. 10) by easy rotation.
- Avoid damaging the gear 50 shaft.
- In the assembly, ensure that the impeller shaft (No. 35) enters into the upper bearing, and the gear of the transmission register KB/KBA 2".

1.7 Disassembly of cover KB/KBA 2" (No. 11)

- Release nipple nut B (No. 17).
- Open screw No. 12, keep the washers No. 13.

2. Checking up

2.1 Transmission register

- Check if all the gears are in good condition, especially gear 50;
- Check also the upper bearing, and if necessary replace the transmission register.

2.2 Membrane K 2"

- Check if the membrane is in good condition, if not, have it replaced (see #3.1)

2.3 Impeller KB/KBA 2"

- Damage of the impeller:
If the shaft is not straight and if there is wear in the ends of the shaft, replace impeller (No. 35).
Gear 95 – check id any damage has been caused, if so, replace the gear (No. 36).

2.4 Inlet spider K 2"

- If any damage has been occurred, have part replaced (see #3.3).

2.5 Wearing in the impeller bushing

- Replace the inlet spider nut K assembly (No. 33) if any wear has occurred (see #3.2).

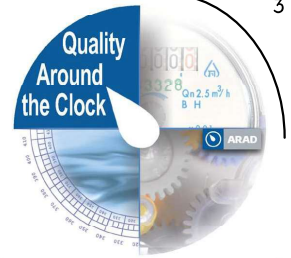
3. Secondary disassembly

3.1 Membrane K 2" (no. 15)

- Open membrane screw No. 37, make sure that in the end of the membrane spring (No. 14) there is a plastic cover.
- In the assembly procedure, make sure that the big diameter of the spring is on the membrane.

3.2 Replacement of impeller bushing

- Open the inlet spider nut K (No. 33) and replace it by a new one.



3.3 Replacement of the inlet spider K 2" (No. 32)

- Take of the inlet spider with special tool (see scheme A).
- Take out the O-Ring (No. 31) and check if it is in good condition.

3.4 Replacement of the strainer K 2" (No. 30)

- Take out the inlet spider (No. 32) – see para. #3.3,
- Open the inlet spider nut – see para. #3.2,
- Clean the inside body and replace the damaged strainer.
- During assembly, screw the inlet spider nut (No. 33) on the spider screw (No. 29) and then screw the whole unit into the body.

4. Assembly instruction

The assembly of the Dose-O-Mat can performed at any time during disassembly but in the opposite way. Please remember to grease all the O-Rings and membrane.