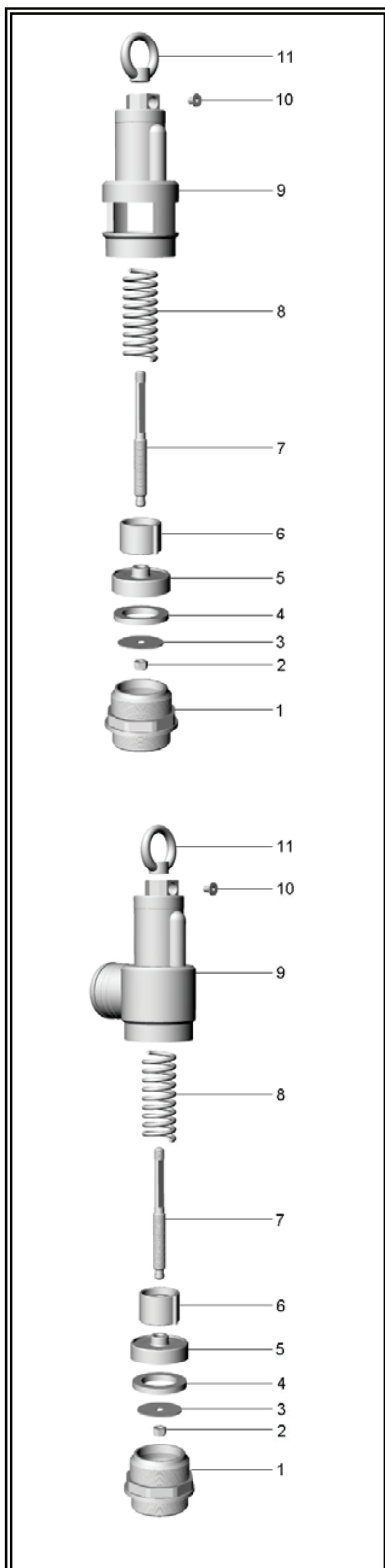


7. SPARE PARTS LIST



Pos	Denomination	Code
1	Seat connection 1"	FOZO 0860 025 008
1	Seat connection 1"1/4	FOZO 0860 032 008
1	Seat connection 1"1/2	FOZO 0860 040 008
1	Seat connection 2"	FOZO 0860 050 008
1	Seat connection 2"1/2	FOZO 0860 070 008
2	Self-locking nut M6	DAAC 0860 025 011
3	Washer Ø23 × 6,5 × 1 (1")	ROAC 0860 025 005
3	Washer Ø30 × 6,5 × 1 (1"1/4)	ROAC 0860 032 005
3	Washer Ø36 × 6,5 × 1 (1"1/2)	ROAC 0860 040 005
3	Washer Ø46 × 6,5 × 1 (2")	ROAC 0860 050 005
3	Washer Ø63 × 6,5 × 1 (2"1/2)	ROAC 0860 070 005
4	Gasket Ø30 × 17 × 4 (1")	GGOM 0860 025 004
4	Gasket Ø38 × 24 × 4,5 (1"1/4)	GGOM 0860 032 004
4	Gasket Ø45 × 30 × 5 (1"1/2)	GGOM 0860 040 004
4	Gasket Ø55 × 38 × 5 (2")	GGOM 0860 050 004
4	Gasket Ø72,5 × 38 × 5 (2"1/2)	GGOM 0860 070 004
5	Gasket holder 1"	SPZO 0860 025 003
5	Gasket holder 1"1/4	SPZO 0860 032 003
5	Gasket holder 1"1/2	SPZO 0860 040 003
5	Gasket holder 2"	SPZO 0860 050 003
5	Gasket holder 2"1/2	SPZO 0860 070 003
6	Adjusting plate Ø27	TOZO 0860 025 010
6	Adjusting plate Ø33	SPZO 0860 025 010
7	Stem M10 × 100	TOZO 0860 025 002
8	Spring 1"	MOAC 0860 025 006
8	Spring	MOAC 0860 032 006
9	Body 1" (art. 86)	FOZO 0860 025 001
9	Body 1"1/4 (art. 86)	FOZO 0860 032 001
9	Body 1"1/2 (art. 86)	FOZO 0860 040 001
9	Body 2" (art. 86)	FOZO 0860 050 001
9	Body 2"1/2 (art. 86)	FOZO 0860 070 001
9	Body 1"1/4 (art. 87)	FOZO 0870 032 001
9	Body 1"1/2 (art. 87)	FOZO 0870 040 001
9	Body 2" (art. 87)	FOZO 0870 050 001
9	Body 2"1/2 (art. 87)	FOZO 0870 070 001
10	Stopping screw TSP M5×10	VTAC 0860 025 007
11	Ring	SPZO 0860 025 009