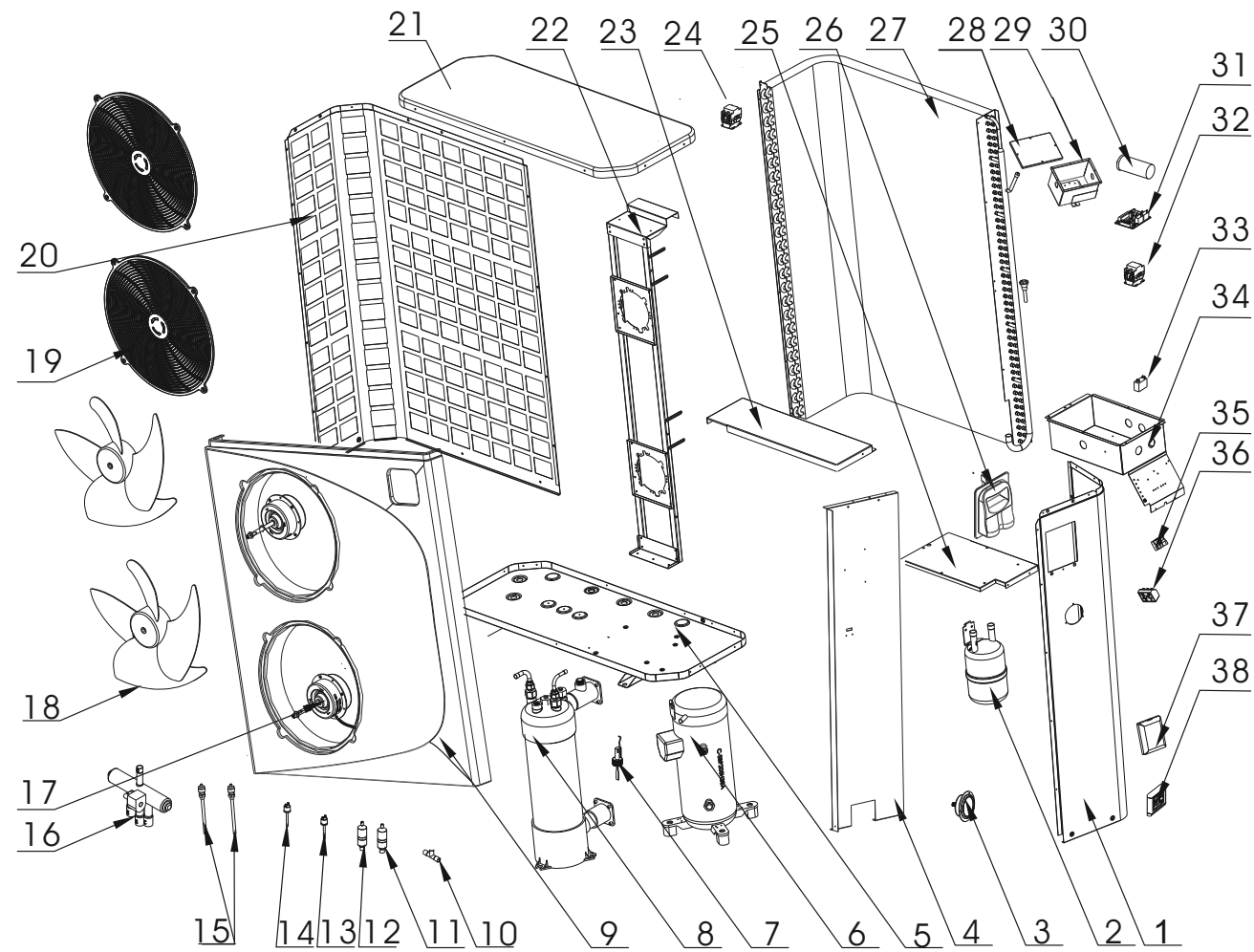


7024530 - HYDRO-PRO HEAT PUMP, TYPE P ON/OFF (TYPE P23T/32)



7024530 - HYDRO-PRO HEAT PUMP, TYPE P ON/OFF (TYPE P23T/32)

NR.	DESCRIPTION	PART NR.
1	LCD touch-screen display assembly Wi-Fi	7016596
2	Right pannel	
3	Pressure meter 0 - 65bar gas F 32	7024868
4	Middle separation panel	
5	Chassis	
6	Compressor QXFS-H49sN345A	
7	Water flow switch with glue adapter 32 mm	7006471
8	Titanium heat exchanger P23/32	7024877
9	Front panel	
10	3-way connection	
11	Filter(2)	
12	Filter(1)	
13	Low pressure switch 0.3MPa/0.15MPa	7011009
14	High pressure switch 3.2MPa/4.4MPa	7011008
15	Hydro-Pro+ Premium Needle valve messing	7006466
16	4-way reverse valve	
17	Axial fan motor 45W YDK45-6	7024870
18	Fan blade 440mmx152mm, 10mm hole anticlockwise, 4 blades 440 mm	7011024
19	Fan motor net	
20	Back panel	
21	Top lid 1115 x 430 mm	7033048
22	Fan motor bracket	
23	Supporting panel	
24	AC contactor(compressor)	
25	Electrical box cover	
26	Connected cover	
27	Evaporator	
28	Explosion-proof box cover	
29	Explosion-proof box	
30a	PC 1001 controller 82300022-35005-310457 P23T/32	7027827
30b	PC 1001 controller 82300022-35005-310457	7026538
31	AC contactor(water pump)	
32	Condensator 3µF type square plugged	7010417
33	Electrical box	
34	2-way wire connector	7011019
35	5-way wire connector	7011025
36	Waterproof cover	
	Three-phase detector	7011010
	Temperature sensor	7011007
	Exhausted temperature sensor 50K	7024867
	Rubber feet	
	Flotide Union coupler with O-ring PVC-U 50 mm x 1 1/2" glue socket x male thread 10bar grey	0100432
	10 metre extension cable	7025168
	Winter cover L*W*H 107*42*123 cm	7017529