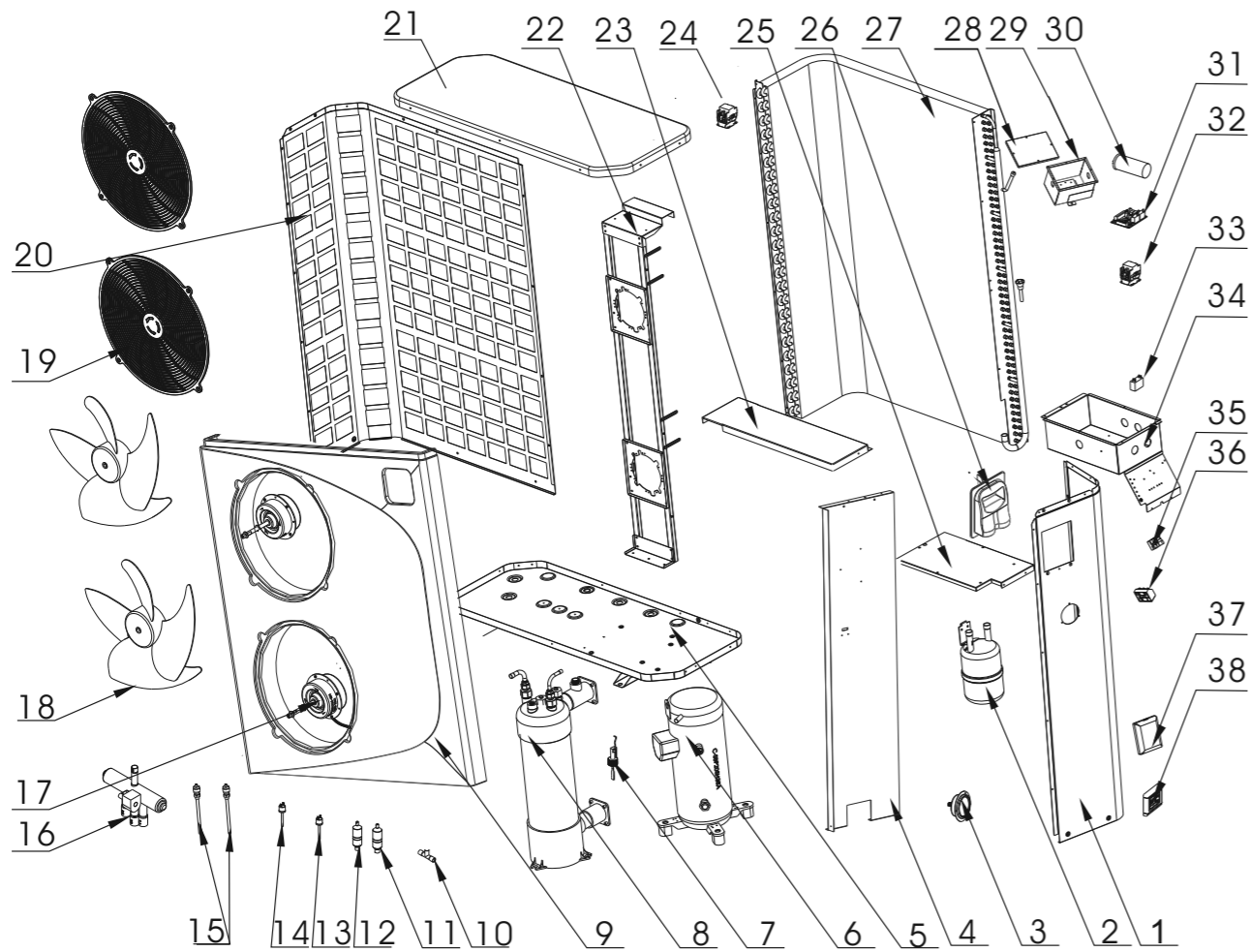


7024531 - HYDRO-PRO HEAT PUMP, TYPE P ON/OFF (TYPE P26T/32)



7024531 - HYDRO-PRO HEAT PUMP, TYPE P ON/OFF (TYPE P26T/32)



NR.	DESCRIPTION	PART NR.
1	LCD touch-screen display assembly Wi-Fi	7016596
2	Right pannel	
3	Pressure meter 0 - 65bar gas F 32	7024868
4	Middle separation panel	
5	Chassis	
6	Compressor QXFS-H59sN345A	
7	Water flow switch with glue adapter 32 mm	7006471
8	Titanium heat exchanger P26/32	7024878
9	Front panel	
10	3-way connection	
11	Filter(2)	
12	Filter(1)	
13	Low pressure switch 0.3MPa/0.15MPa	7011009
14	High pressure switch 3.2MPa/4.4MPa	7011008
15	Hydro-Pro+ Premium Needle valve messing	7006466
16	4-way reverse valve	
17	Axial fan motor 45W YDK45-6	7024870
18	Fan blade 440mmx152mm, 10mm hole anticlockwise, 4 blades 440 mm	7011024
19	Fan motor net	
20	Back panel	
21	Top cover	
22	Fan motor bracket	
23	Supporting panel	
24	AC contactor(compressor)	
25	Electrical box cover	
26	Connected cover	
27	Evaporator	
28	Explosion-proof box cover	
29	Explosion-proof box	
30a	PC 1001 controller 82300022-35005-310457 P26T/32	7027828
30b	PC 1001 controller 82300022-35005-310457	7026538
31	AC contactor(water pump)	
32	Condensator 3µF type square plugged	7010417
33	Electrical box	
34	2-way wire connector	7011019
35	5-way wire connector	7011025
36	Waterproof cover	
	Three-phase detector	7011010
	Temperature sensor	7011007
	Exhausted temperature sensor 50K	7024867
	Rubber feet	
	Mega Koppeling met O-ring PVC-U 50 mm x 1 1/2" lijmmof x buitendraad 10bar grijs	0100432
	10 metre extension cable	7025168
	Winter cover L*W*H 107*42*123 cm	7017529