

Sand / media filters



Advantages of sand bed filtration:

Large dirt-retaining capacity. Deep filtration. Simple and continuous action with good results. Filtering out of suspended solids. Durability of the filter material.

Advantages of UDI®:

The combination of the strength of steel and the resistance of plastic allows for a wide range of applications. In this respect, high working pressures (up to 8 bar) are no problem.

The UDI® vertical sand filter has a filter bottom with removable filter plugs. Due to the absence of a pipe construction inside, the sand bed is fully utilised, and the trapping of dirt is prevented. This allows for reaching good results with a higher filtration speed (and therefore, a higher capacity). Perfect backwashing can be achieved, whereby all the captured dirt is washed out of the filter media. The filter is provided with enough manholes to allow for easy inspections and sand changes.

The UDI® horizontal sand filter has two rows of filter plugs mounted on a low-lying central pipe. This results in a fairly thick filter bed with a relatively large surface. The additional manhole allows for easy changing of the filling and/or the central pipe.

The UDI® high-bed (multi)media filters have a filter bottom with removable filter plugs. The raised filter bed results in more contact time with the medium, which provides the possibility of achieving higher capacities. In addition, it is possible to use more layers as a filter medium, which increases capacity and/or enhances quality. These filters are provided with enough manholes to allow for easy inspections and changing of the filter material.

All models can be modularly joined, in conjunction with appropriate flush valves, to form units of any shape and capacity and for continuous service.

To this end, a comprehensive range of fittings, connectors, and rapid couplings of the same make is available.

Coating:

In preparation for the coating to be applied, the UDI® filters are provided with a special layer of zinc phosphate. This treatment ensures proper adhesion of the coating, and protects against rusting-through from the inside. Subsequently, the polyester coating is applied electrostatically, both internally and externally, before being furnace-hardened. The entire process involves 7 steps, and results in a perfect coating with a thickness of approximately 120 microns.



Sand/media filter 4000 Series

Technical data

Model:

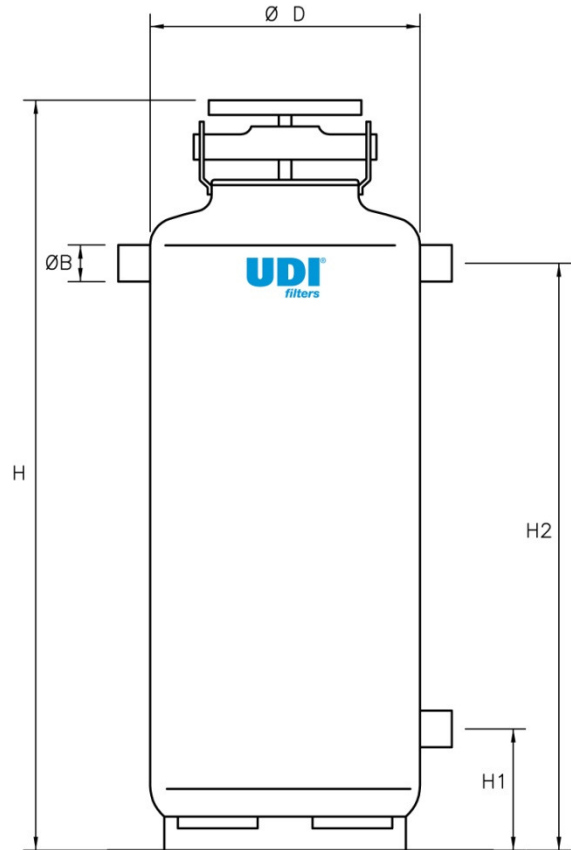
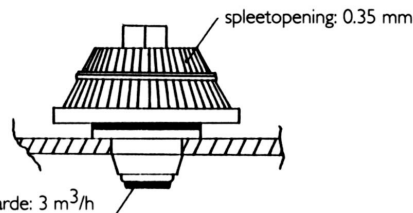
Vertical cylinder with filter bottom, standing on ring foot or multiple feet.

Applications:

- Pre-filtration of disinfection equipment
- Preparation for micro and ultrafiltration
- Recirculation systems
- Cooling water processes
- Irrigation systems
- Swimming-pool filtration
- Basin water filtration
- Groundwater purification

Materials:

- Polyester-coated steel
- Neoprene rubbers
- Polypropylene filter plugs



| Type | Unit | 4U4121 | 4U41615 | 4U4202 | 4U4242 |
|--------------------------------|-------------------|--------|---------|--------|--------|
| Diameter D | inch | 12" | 16" | 20" | 24" |
| Capacity | m ³ /h | 3.5 | 6.5 | 10 | 14 |
| Connection B | inch | 1" | 1.5" | 2" | 2" |
| H | mm | 1200 | 1200 | 1200 | 1330 |
| H | mm | 110 | 180 | 180 | 245 |
| H 2 | mm | 755 | 870 | 880 | 935 |
| Weight | kg | 42 | 50 | 70 | 90 |
| Filter plugs | | 6 | 8 | 14 | 20 |
| Filter-bed height | cm | 45 | 45 | 45 | 45 |
| Filling material (sand) | kg | 50 | 75 | 125 | 200 |
| Filling material | l | 30 | 55 | 90 | 130 |
| Manholes | | 1 * 6" | 1 * 8" | 1 * 8" | 1 * 8" |
| | | 1 * 4" | 1 * 4" | 1 * 6" | 1 * 6" |
| Feet | | ring | ring | ring | feet |
| Max. pressure | bar | 10 | 10 | 10 | 10 |

Sand/media filter 4000 series (large)

Technical data



Model:

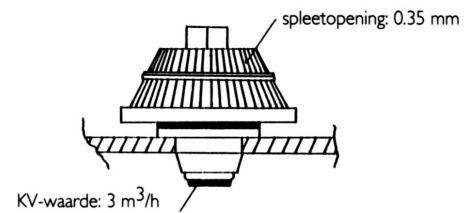
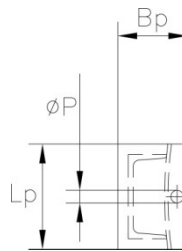
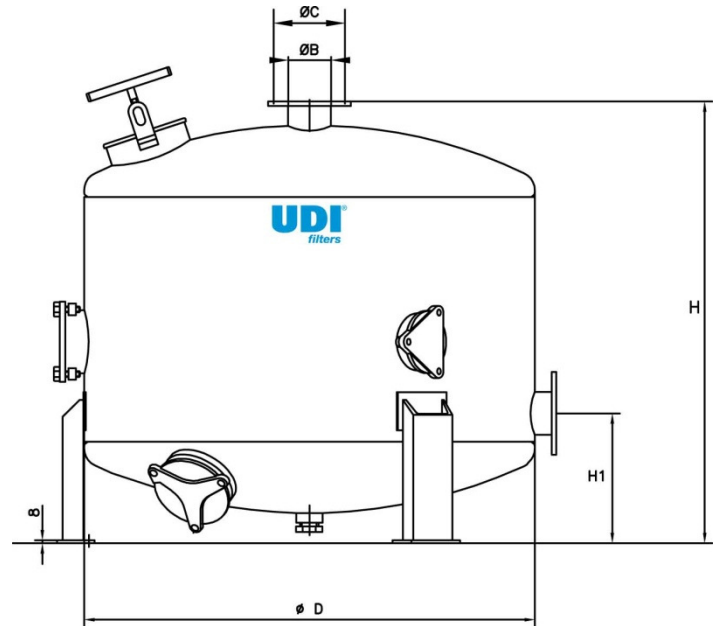
Vertical cylinder with filter bottom, standing on ring foot or multiple feet.

Applications:

- Pre-filtration of disinfection equipment
- Preparation for micro and ultrafiltration
- Recirculation systems
- Cooling water processes
- Irrigation systems
- Swimming pool filtration
- Basin water filtration
- Groundwater purification

Materials:

- Polyester-coated steel
- Neoprene rubbers
- Polypropylene filter plugs



| Type | Unit | 4U43025 | 4U4363 | 4U4423 | 4U4484 | 4U4604 |
|--------------------------------|-------------------|---------|--------|--------|--------|--------|
| Diameter D | inch | 30" | 36" | 42" | 48" | 60" |
| Capacity | m ³ /h | 22 | 32 | 45 | 58 | 90 |
| Flange (ISO 7005 PN16) | | | | | | |
| Connection B | inch | 2.5" | 3" | 3" | 4" | 4" |
| Diameter | mm | 185 | 200 | 200 | 220 | 220 |
| Pitch C | mm | 145 | 160 | 160 | 180 | 180 |
| Holes | mm | 4* Ø18 | 8* Ø18 | 8* Ø18 | 8* Ø18 | 8* Ø18 |
| H | mm | 1070 | 1085 | 1100 | 1180 | 1470 |
| H 1 | mm | 310 | 320 | 335 | 345 | 510 |
| Weight | kg | 135 | 185 | 250 | 310 | 675 |
| Filter plugs | | 31 | 42 | 58 | 72 | 106 |
| Filter-bed height | cm | 40 | 40 | 40 | 40 | 40 |
| Filling material (sand) | kg | 250 | 375 | 500 | 650 | 1000 |
| Filling material | litre | 180 | 260 | 350 | 450 | 700 |
| Manholes | | 1 * 8" | 1 * 8" | 1 * 8" | 1 * 8" | 2 * 8" |
| | | 2 * 6" | 2 * 6" | 3 * 6" | 3 * 6" | 4 * 8" |
| Feet | | 3 | 3 | 3 | 3 | 4 |
| Lp | mm | 110 | 110 | 150 | 150 | 150 |
| Bp | mm | 90 | 90 | 100 | 100 | 100 |
| ØP | mm | 18 | 18 | 18 | 18 | 18 |
| Max. pressure | bar | 10 | 10 | 10 | 10 | 10 |

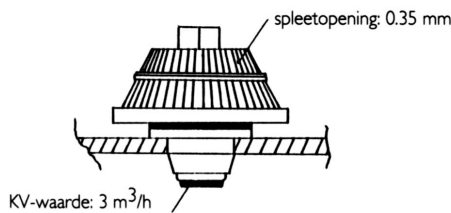
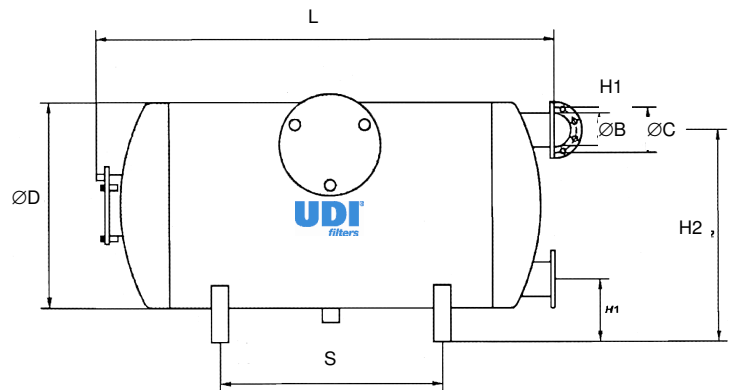
Sand/media filter 9000 Series Technical data

Applications:

- Pre-filtration of disinfection equipment
- Preparation for micro and ultrafiltration
- Recirculation systems
- Cooling water processes
- Irrigation systems
- Swimming pool filtration
- Basin water filtration
- Groundwater purification

Materials:

- Polyester-coated steel
- Neoprene rubbers
- Polypropylene filter plugs



| Type | Unit | 4U9202 | 4U9243 |
|--------------------------------|-------------------|----------|----------|
| Diameter | inch | 20" | 24" |
| Capacity | m ³ /h | 22 | 32 |
| Flange (ISO 7005 PN16) | | | |
| Connection B | inch | 2.5" | 3" |
| Diameter | mm | 185 | 200 |
| Pitch C | mm | 145 | 160 |
| Holes | mm | 4 * Ø 18 | 8 * Ø 18 |
| H 1 | mm | 150 | 175 |
| H 2 | mm | 490 | 635 |
| L | mm | 1160 | 1330 |
| S | mm | 555 | 730 |
| Weight | kg | 80 | 103 |
| Filter plugs | | 16 | 18 |
| Filter-bed height | cm | 10 | 15 |
| Filling material (sand) | kg | 150 | 250 |
| Manholes | | 2 * 8" | 2 * 8" |
| Working pressure | bar | 8 | 8 |
| Max. pressure | bar | 10 | 10 |