



# ITAP-FIT® FITTINGS

## 645 Female elbow



SIZE	CODE	PACKING
12x3/8"	645B038012	12/360
12x1/2"	645B012012	12/360
14x1/2"	645B012014	12/252
15x1/2"	645B012015	12/252
16x1/2"	645B012016	10/300
18x1/2"	645B012018	10/160
18x3/4"	645B034018	10/160
20x1/2"	645B012020	10/160
22x3/4"	645B034022	8/128
25x3/4"	645B034025	8/128
28x1"	645B100028	6/114

### CERTIFICATIONS



### TECHNICAL SPECIFICATIONS

Bodies in de-zincification resistant brass (DZR).

Minimum and maximum working temperatures: -20°C, 120°C (allowed peaks of 150°C).

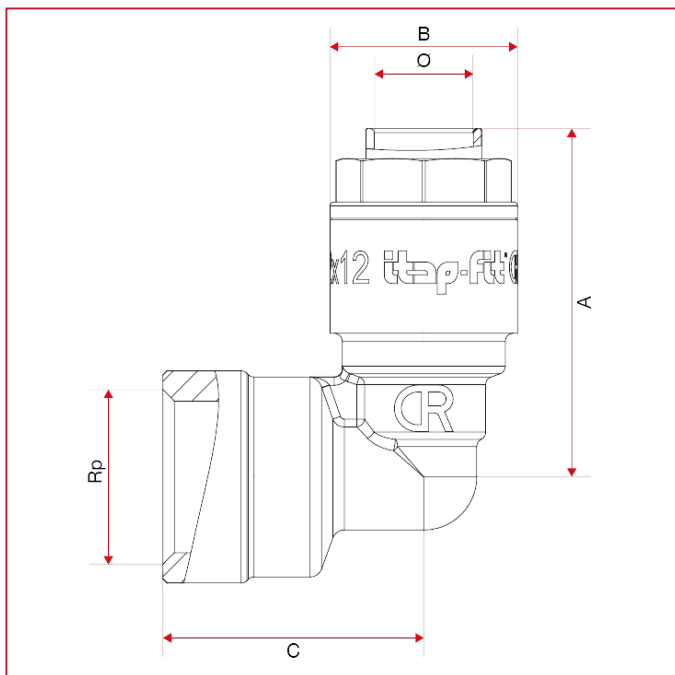
Nominal pressure:

Copper pipe: 20bar at 25°C, 10bar at 90°C.

PEX and polybutylene pipes: 12bar at 25°C, 5 bar at 90°C.

Threads: ISO 7/1 (equivalent to DIN EN 10226-1 and BS EN 10226-1).

### OVERALL DIMENSIONS



	12x3/8"	12x1/2"	14x1/2"	15x1/2"	16x1/2"	18x1/2"	18x3/4"	20x1/2"	22x3/4"	25x3/4"	28x1"
A	42,7	42,7	43,6	43,9	44,5	49,6	49,6	54,6	53,9	58,6	59,9
B	23	23	25	26	27	31,5	31,5	34	36	40	43,7
C	28,5	32	32,6	33	33,5	34,5	37,3	35,5	40	41,4	47,2





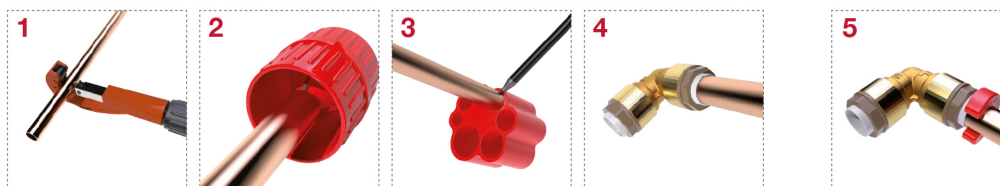
# ITAP-FIT<sup>®</sup> FITTINGS

## INSTRUCTIONS



### FOUR SIMPLE STEPS FOR A SAFE INSTALLATION

1. Cut the pipe by a rotary pipe cutter.
  2. Deburr the external surface of the pipe.
  3. Insert the pipe in the depth gauge and mark the pipe.
  4. Insert the pipe by pushing it as far as it reaches the blocking point, that should correspond to the mark made before.
- If you are using cross-linked polyethylene pipes (PEX) or polybutylene pipes you have to insert the liner before the connection.



5. To disconnect the fitting you just need to push the release liner by the clip and at the same time pull the pipe.

### ADVANTAGES:

- SAVING OF TIME DURING THE INSTALLATION AS FAR AS 90%
- SUITABLE FOR SANITARY AND HEATING PLANTS
- NO NEED OF SPECIAL OR EXPENSIVE TOOLS FOR THE INSTALLATION
- THE CONNECTION IS REVERSIBLE

### USE OF THE FITTINGS WITH COPPER, PEX AND POLYBUTYLENE PIPE

