



◀ CP/LM

Face Width:
 CP: 5.0" (127 mm)
 LM: 9.0" (229 mm)
Face Height: 3.5" (89 mm)
LED: 1 (CP); 2 (LM)
Finish: AB, AT, CU, NP[‡], BZ, DG, WI, SB, FB, FW[‡], SV[‡]
Material: Copper



◀ UN/PD

Face Width:
 UN: 5.2" (91 mm)
 PD: 9.0" (229 mm)
Face Height: 3.5" (89 mm)
LED: 1 (UN); 2 (PD)
Finish: AB, AT, BS, NP[‡], BZ, DG, WI, SB, FB, CB, DT, FW[‡], SV[‡]
Material: Brass or Composite



◀ HS + color

Face Height: 2.3" (58 mm)
Face Width: 8.0" (203 mm)
Depth: 0.9" (23 mm)
LED: 2
Finish: BZ, DG, WI, SB, FB, FW[‡], SV[‡]
Material: Aluminum

Path/Area Lights ▶



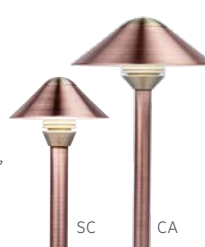
◀ HC/JS + color

Diameter:
 HC: 3.6" (92 mm)
Riser Required: P⁺
 JS: 6.3" (160 mm)
Riser Required: G⁺
LED: HC: 1; JS: 1, 3
Finish: AB, AT, CU, NP[‡], BZ, DG, WI, SB, FB, FW[‡], SV[‡]
Material: Copper/Brass



◀ PF/DM + color

Diameter:
 PF: 5.0" (127 mm)
Riser Required: P⁺
 DM: 7.1" (180 mm)
Riser Required: G⁺
Finish: AB, AT, CU, NP[‡], BZ, DG, WI, SB, FB, FW[‡], SV[‡]
LED: PF: 1; DM: 1, 3
Material: Copper/Brass



◀ SC/CA + color

Diameter:
 SC: 4.7" (119 mm)
Riser Required: P⁺
 CA: 7.6" (193 mm)
Riser Required: G⁺
LED: SC: 1; CA: 1, 3
Finish: AB, AT, CU, NP[‡], BZ, DG, WI, SB, FB, FW[‡], SV[‡]
Material: Copper/Brass



◀ PL/TM + color

Diameter:
 PL: 6.0" (152 mm)
 TM: 5.0" (127 mm)
Riser Required: A⁺
LED: 1, 3
Finish: BZ, DG, WI, SB, FB, FW[‡], SV[‡]
Material: Aluminum



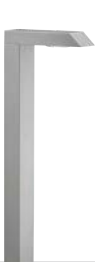
◀ RW + color

Height: 7.6" (193 mm)
Diameter: 4.1" (103 mm)
LED: 3, 6, 9
Finish: BZ, DG, WI, SB, FB, SV[‡], FW[‡], SV[‡]
Material: Aluminum



◀ PM + color

Height:
 14.0" (356 mm)
 XT: 18.5" (470 mm)
Diameter: 2.5" (64 mm)
LED: 1, 3, 6, 9
Finish: BZ, DG, WI, SB, FB, SV[‡], FW[‡], SV[‡]
Material: Aluminum



◀ M-PL + color

Height: 21.3" (541 mm)
Diameter: 7.4" (187 mm)
LED: 1
Finish: BZ, DG, WI, SB, FB, FW[‡], SV[‡]
Material: Aluminum



◀ M-PJ + color

Height: 22.1" (561 mm)
Width: 2.8" (71 mm)
Depth: 7.4" (187 mm)
LED: 1, 3, 6
Finish: BZ, DG, WI, SB, FB, FW[‡], SV[‡]
Material: Aluminum



◀ M-PK + color

Height: 22.5" (572 mm)
Width: 2.2" (56 mm)
Depth: 7.4" (187 mm)
LED: 1, 3
Finish: BZ, DG, WI, SB, FB, FW[‡], SV[‡]
Material: Aluminum



◀ M-PZ + color

Height: 22.1" (561 mm)
Width: 2.5" (64 mm)
Depth: 7.4" (187 mm)
LED: 1, 3
Finish: BZ, DG, WI, SB, FB, FW[‡], SV[‡]
Material: Aluminum



◀ TD + color

Height: 16.2" (411 mm)
 XT: 29.5" (749 mm)
Diameter: 5.0" (127 mm)
LED: 1, 3, 6, 9
Finish: AB, AT, CU, NP[‡], BZ, DG, WI, SB, FB, FW[‡], SV[‡]
Material: Copper/Brass



◀ FG + color

Height: 18.0" (457 mm)
Diameter: 5.0" (127 mm)
LED: 1, 3, 6, 9
Finish: AB, AT, CU, NP[‡], BZ, DG, WI, SB, FB, FW[‡], SV[‡]
Material: Copper/Brass

Underwater Lights ▶



◀ LP + color

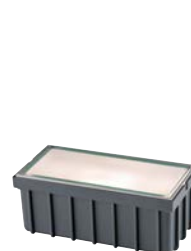
Diameter: 2.7" (69 mm)
Height: 1.9" (48 mm)
LED: 1, 3
Finish: BS
Lead: 30' (9 m) or 100' (30 m)
Material: Brass



◀ LL + color

Length: 4.0" (102 mm)
Diameter: 3.3" (84 mm)
LED: 1, 3, 6, 9
Finish: BS
Lead: 30' (9 m) or 100' (30 m)
Material: Brass

In-Grade Lights ▶



◀ HP-48 + color

Height: 3.1" (79 mm)
Width: 4.0" (102 mm)
Length: 8.0" (203 mm)
LED: 1
Finish: DS
Material: Composite