

# HC

The cost-effective solution for residential projects, the HC Controller provides smart water savings and remote irrigation management capabilities.

Try Hydrawise Software today,  
hardware-free at [hydrawise.com](http://hydrawise.com)

## KEY BENEFITS

- Number of stations:
  - 6 or 12 (fixed models)
- Standard programming option allows for 6 independent irrigation programs and 6 start times per program
- 2 sensor inputs available for use with any Klik sensors and HC Flow Meter
- Station outputs can also be used to activate a pump start relay or master valve
- Wi-Fi enabled for quick connection to Hydrawise® Software
- 2¾" full-color touchscreen display for Wi-Fi setup, zone testing, and offline programming at the control panel
- Built-in milliamp sensor for wire fault detection and alerts (12-zone model)

## OPERATING SPECIFICATIONS

- Transformer input: 120 VAC
- Transformer output (24 VAC): 1 A
- Controller maximum current draw: 0.8 A
- Station output (24 VAC): 0.56 A
- P/MV output (24 VAC): 0.28 A
- 2.4 GHz (only) Wi-Fi router compatible, 802.11 b/g/n 20 MHz
- Supported security protocols: WPA/WPA2 Personal (only) TLS, SSL
- Approvals: UL, cUL, FCC, CE, RCM, ISED
- Warranty period: 2 years

## USER-INSTALLED OPTIONS

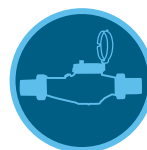
- Wireless HC Flow Meter option permits wireless flow monitoring for Hydrawise enabled systems



### HC

(plastic indoor)  
Height: 6"  
Width: 7"  
Depth: 1¼"

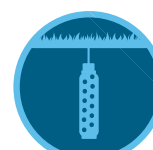
Compatible with:



HC Flow Meter



Rain-Clik  
Sensor



Soil-Clik  
Sensor



### EPA WaterSense Approved

Recognized as a responsible water-saving tool  
by the U.S. Environmental Protection Agency

HC	
Model	Description
HC-600i	Fixed 6-station, plastic indoor wall mount
HC-1200i	Fixed 12-station, plastic indoor wall mount